

The Nisga'a Nation is represented by Nisga'a Lisims Government (NLG) – a modern, forward thinking administration based on traditional culture and values. The Nisga'a Final Agreement is the first modern treaty in British Columbia to provide constitutional certainty in respect of an Aboriginal people's section 35 right to self-government.

The Treaty recognizes Nisga'a Lands (2000 square kilometers) and opens the door for joint economic initiatives in the development of the Nisga'a Nation's natural resources.

Txaa Nitkws

Txaa Nitkws was formed by Alan Clayton and Floyde Stevens, Hereditary Chiefs from the Nisga'a First Nation and WB Melback.

Txaa Nitkws will provide construction solutions to the ever-growing demands for opportunities within the Nisga'a Territory.



Floyde Stevens is from the Nisga'a Village of Gingolx, a Nisga'a Hereditary Chief of the Laxgibuu (Wolf) clan, holding the Nisga'a name Kwaxsuu.

Floyde is a talented, results-producing Development Manager with a proven record of accomplishment in planning and leading comprehensive business strategies in support of business goals and objectives.



Alan Clayton is from the Nisga'a Village of Gitlakdamix, born in the village of Gingolx. Alan is also a Chief in the Ganada(Raven) clan with the Nisga'a name Luu Dox.

Alan has extensive experience in Nisga'a Government and business sectors that play a role in the Northern area. Alan has a passion for his community and wants to see long term economic prosperity for the Nisga'a Nation.





- Txaa Nitkws services cater to our clients business needs for business and / or market assessment and planning, project management, construction management, construction services. Txaa Nitkws works with communities existing partners to assist with capacity building, employment and economic stability.
- Our experience has given us the privilege to work across almost every industry sector and successfully within the Nisga'a Nation, Txaa Nitkws assists our clientele secure government funding while playing an active role on the project planning and consulting of the approved initiatives.



Services Offered

INDUSTRY SECTORS SERVED

- Mining & Material Handling
- Cement
- Forestry, Pulp & Paper
- Oil & Gas
- Power Generation
- Agriculture

CAPITAL PROJECT EXECUTION

- EPC
- General Contractor
- Mechanical & Electrical Scopes

SUSTAINING CAPITAL PROJECTS

- EPC
- General Contractor
- Mechanical & Electrical Scopes

MAINTENANCE

- EPC
- General Contractor
- Mechanical & Electrical Scopes

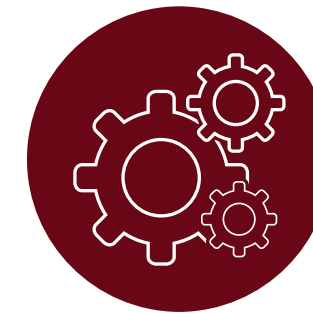


Experienced Management Teams

- Solid Industrial Installation Expertise
- Lessons Learned
- Greenfield
- Brownfield



- Superior Planning, Estimating & Benchmarking
- Experience Integrating with Engineering & Procurement
- Modularization Experience & Fabrication Facilities



Tier 1: Systems & Tools

- Safety Program
- Quality Program
- Project Controls
- Document Controls
- Project Management
- Construction Management
- Risk Identification & Management



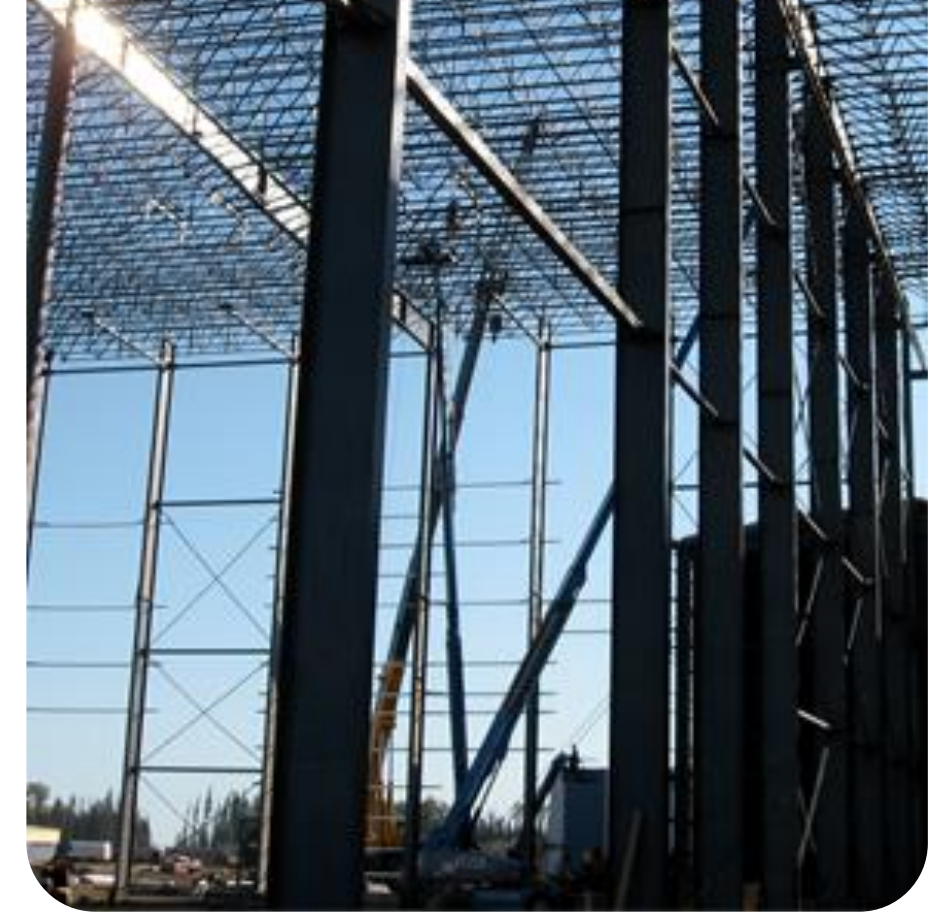
- Labour Flexibility
- Local Engagement Sustainability



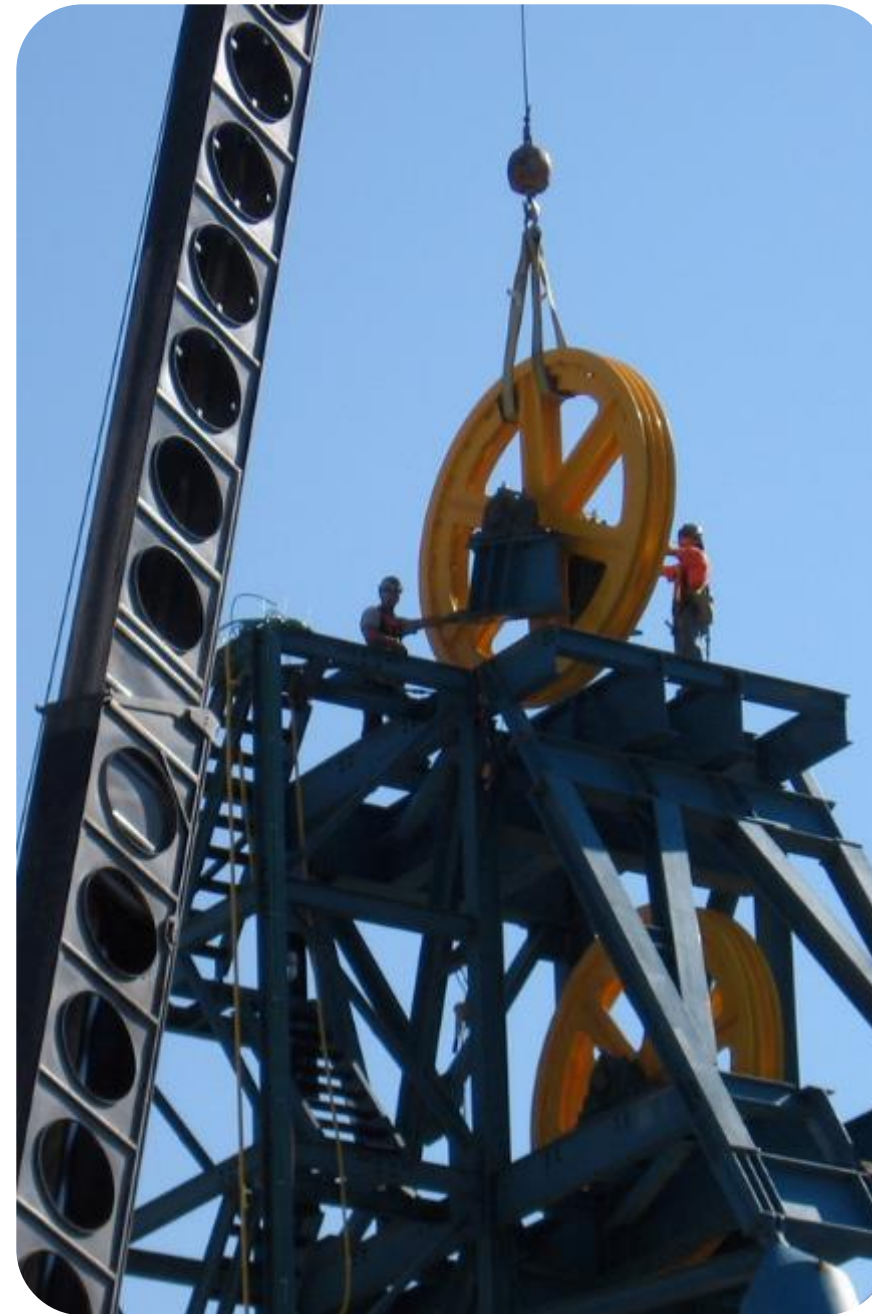
Civil Direct Hire/Self Perform Capabilities



Structural Direct Hire/Self Perform Capabilities



Industrial Mechanical Direct Hire/Self Perform Capabilities



Electrical & Instrumentation Direct Hire/Self Perform Capabilities



Project Experience

Louisiana Pacific OSB Plant

FORT ST. JOHN, BRITISH COLUMBIA

STRUCTURAL

MECHANICAL

PIPING

TIC \$420 MILLION



Cameco Cigar Lake Mine

CIGAR LAKE, SASKATCHEWAN

PROJECT MANAGEMENT

CONSTRUCTION MANAGEMENT

TIC \$1.2 BILLION



Tolko Meadow Lake OSB Mill

MEADOW LAKE, SASKATCHEWAN

MECHANICAL

STRUCTURAL

CIVIL

TIC \$400 MILLION



Diavik Diamond Mine

YELLOWKNIFE, NORTH WEST TERRITORIES

MECHANICAL

STRUCTURAL

CIVIL

PIPING

INSULATION

TIC \$90 MILLION



Kirkland Lake Gold Effluent Treatment Plant

KIRKLAND LAKE, ONTARIO

PROJECT MANAGEMENT

CONSTRUCTION MANAGEMENT

STRUCTURAL

MECHANICAL

PIPING

TIC \$5 MILLION



St. Lawrence Cement Dust Extraction System

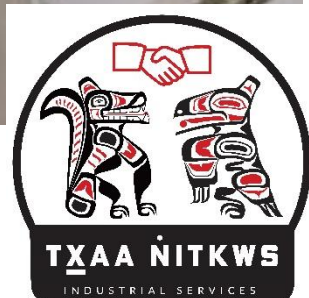
MISSISSAUGA, ONTARIO

MECHANICAL

STRUCTURAL

FABRICATION

TIC \$90 MILLION



Kirkland Lake Gold Thickener Project

KIRKLAND LAKE, ONTARIO

MECHANICAL

STRUCTURAL

WELDING

ELECTRICAL/
INSTRUMENTATION

TIC \$24 MILLION



Grant Forest Corporation

ALLENDALE, SOUTH CAROLINA

GENERAL CONTRACTOR

TIC \$600 MILLION



Past & Present Clients

GLENCORE

Strathcona Mine Mill
Various Projects



Timmins
New Concrete and Building
for Timmins Mine



Construction Management of New Mine



Cigar Lake Mine Construction
Blind River Refinery
Port Hope Refinery

Madsen Gold

Re-Open Mine
Relocate Pickle Lake Mine Mill to
Madsen Site



Various Capital Projects
Over 8 Years



Underground Construction Services
at 5 mines

BARRICK

Sustaining Capital
Projects



Sustaining Capital
Projects



Various Projects
New Thickener, New ETP, New Shop,
Mine Mill Expansion

RioTinto

Diavik Diamond Mine
Various Capital Expansion Projects
over
7 Years

And Many
Others!



Affiliated Partners

AF EchoBay Steel, a Strategic Alliance with A & H Steel Providing an integrated, full-service (Estimating, Detailing, Production, Installation) offering of rebar products and services for commercial, industrial, residential, institutional and infrastructure projects.

AF EchoBay Electrical, a Strategic Alliance with Chemco Energy
Canadian Owned: Electrical Engineering, Instrumentation, Civil, Fiber Optics, Hydrovac Services, Horizontal Drilling, Logistics, Access Matting, Rail Civil Construction and Maintenance Services

AF EchoBay Water Services, a Strategic Alliance with NCS Fluid Handling Systems
Wellpoint Dewatering, Hydro Testing, Filtration, River Diversion, Water Transfer & Water Treatment, Aqua-flex Environmental Spill Response.

AF EchoBay Park Derochie, Canadian Owned: Coatings, Fireproofing, Blasting, Metalizing, Scaffolding, Insulation (hot & cold), Spray Foam.

AF EchoBay Environmental, a Strategic Alliance with Secure Energy
Construction and mine site water treatment, remediation and reclamation, demolition and decommissioning, pipe and tank cleaning, dredging and dewatering, waste management and transportation.



RioTinto

PLACER DOME
Pure Gold

GLENCORE

KL KIRKLAND LAKE GOLD

Cameco

BARRICK

Compass
Minerals

SUNCOR
ENERGY

Mosaic

Canadian Natural

